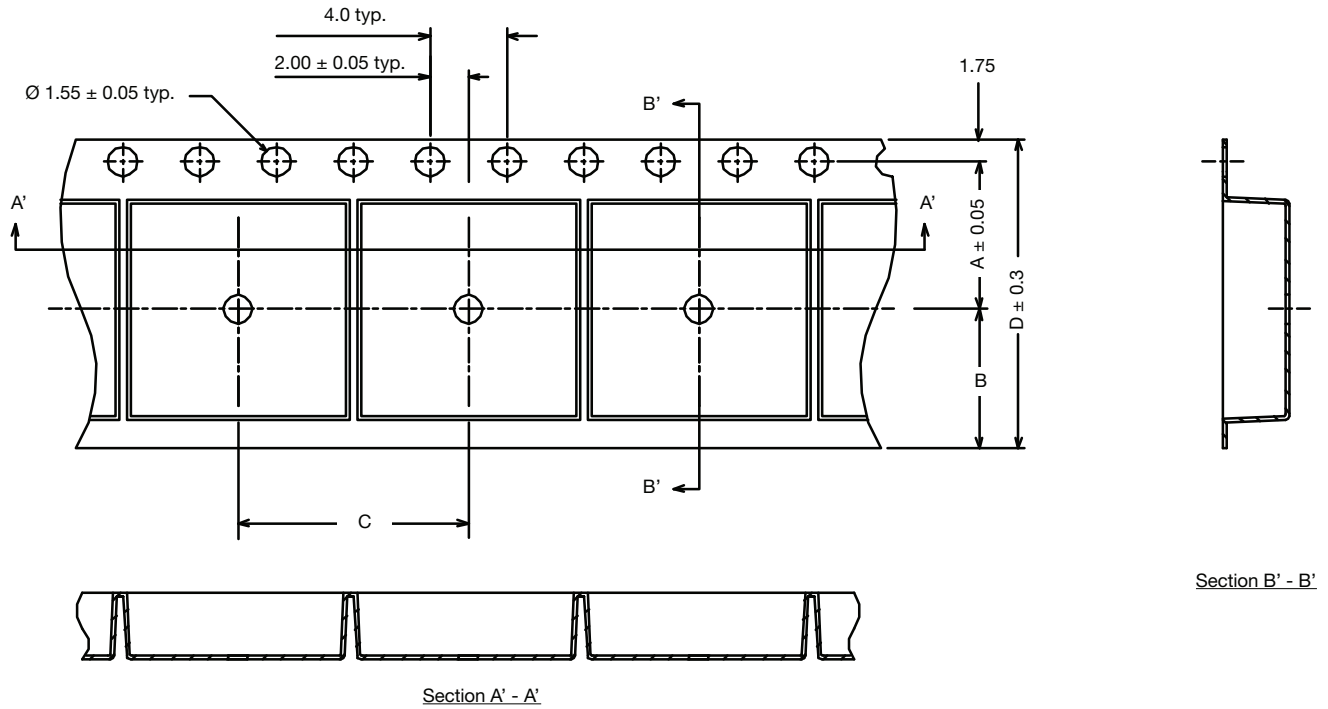


SOIC PACKAGES (narrow and wide body)



Notes

1. Material: Black conductive or black static dissipative.
2. All dimensions in millimeters unless otherwise specified.
3. Tolerances unless specified will be $\pm 0.10 \text{ mm}$.

PACKAGE	A	B	C	D	REEL DIAMETER	QUANTITY PER REEL
SOIC-16(N)	7.5	6.75	8	16	330	2500
SOIC-14(N)	7.5	6.75	8	16	330	2500
SOIC-8(N)/ SOIC-8(N) PowerPAK	5.5	4.75	8	12	330 min.	2500
SOIC-14(W)	7.5	6.75	12	16	330	1500
SOIC-16(W)	7.5	6.75	12	16	330	1500 (T1)
SOIC-24(W)	11.5	10.75	12	24	330	1500
SOIC-20(W)	11.5	10.75	12	24	330	1500
SOIC-8(N) Simconix	5.5	4.75	8	12	330 min.	2500

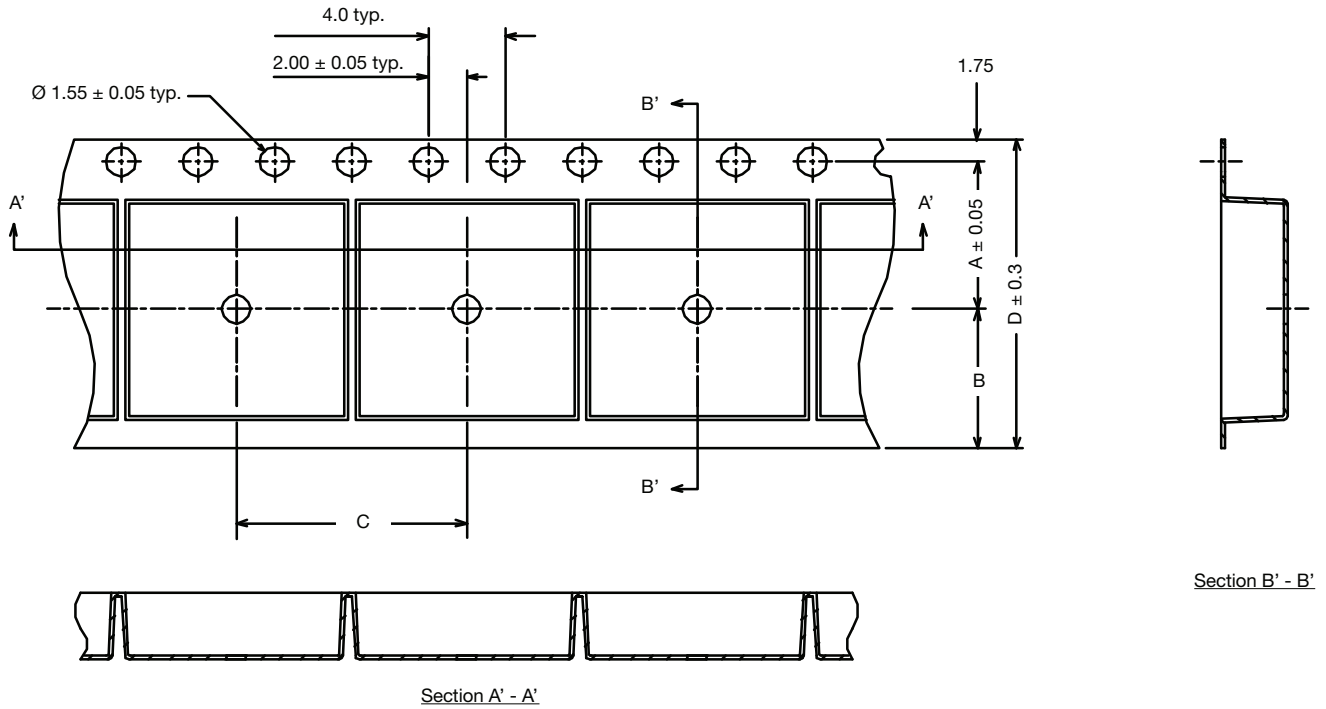
ECN: C10-0533-Rev. AD, 28-Jun-10
DWG: 91-5209-x

Tape Information

Vishay Siliconix



SOT-143/SOT23-8L

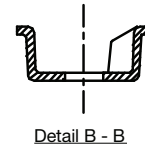
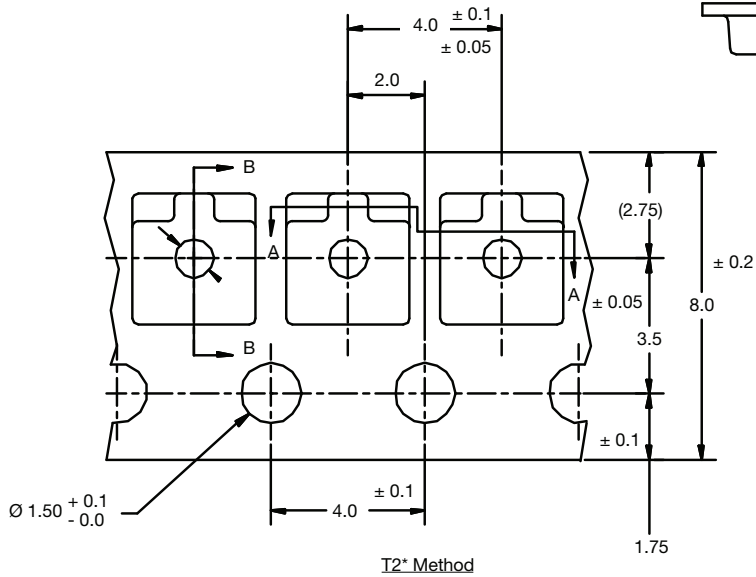
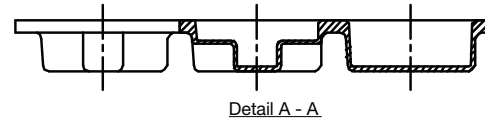
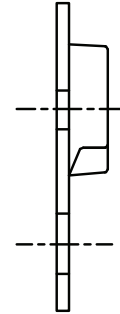
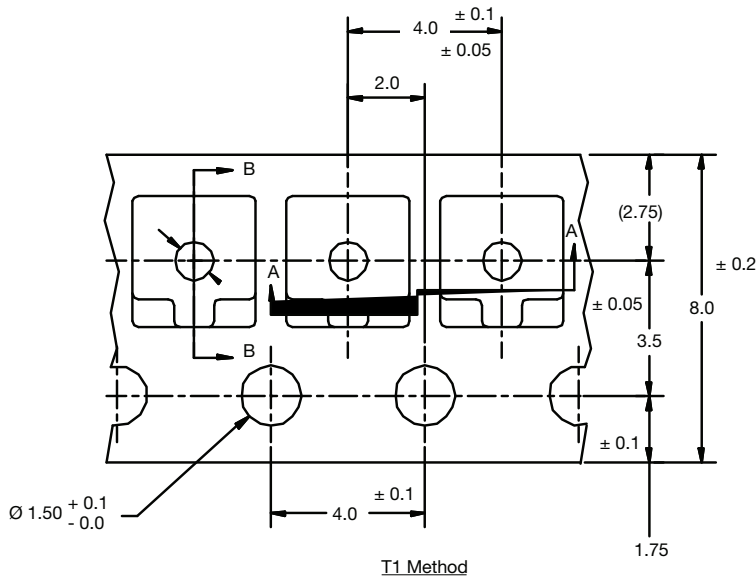


Notes

1. Material: Black conductive or black static dissipative.
2. All dimensions in millimeters unless otherwise specified.
3. Tolerances unless specified will be ± 0.10 mm.

PACKAGE	A	B	C	D	REEL DIAMETER	QUANTITY PER REEL
SOT-143 Low	3.5	2.75	4	8	178/330	3000
SOT-143 High	3.5	2.75	4	8	178/330	3000
SOT23-8L	3.5	2.75	4	8	178/330	3000

SOT-23 (T1 and T2* methods)



Notes

1. 10 sprocket hole pitch cumulative tolerance ± 0.2 mm.
2. Camber not to exceed 1 mm in 100 mm.
3. Material: Black conductive or black static dissipative.
4. A_0 and B_0 measured on a plane 0.3 mm above the bottom of the pocket except M carrier tape.
5. K_0 measured from a plane on the inside bottom of the pocket to the top surface of the carrier.
6. It should be measured from:
 - a) sprocket hole to pocket center and
 - b) sprocket hole to pocket hole.
7. All dimensions in millimeters unless otherwise specified.
8. Tolerances unless specified will be ± 0.10 mm.

METHOD	REEL DIAMETER	QUANTITY PER REEL
T1	178 mm (7")	3000
T2	178 mm (7")	3000